

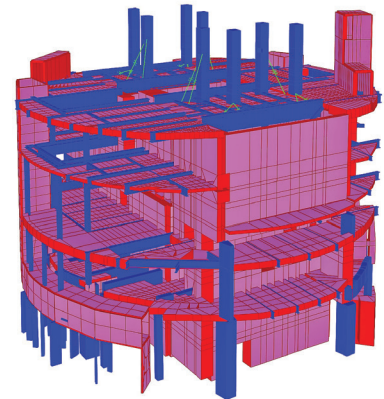
PROJECT Patchwork

MUMBAI

Safety Assessment of Narora Atomic Power Plant, Uttar Pradesh

TCE is executing a project for Seismic Margin Assessment of all safety related civil structures for Narora Atomic Power Plant, Uttar Pradesh and is on the verge of successful completion. In the aftermath of the Fukushima catastrophe, there are stringent regulatory requirements imposed on the nuclear industry. TCE's expertise in this area is expected to be sought for similar on-going nuclear installations in India.

The project required the team to be stationed at Narora site for three months to digitize extensive data involving almost 1300 drawings which were originally done 35 years ago, processing of huge data-base for performing and reporting Seismic Margin Assessment. TCE is working with the Atomic Energy Regulatory Board which clears the project methodology etc.



DELHI

Design and supervision of construction works for Technology Centres, MSME

'Technology Centre Systems Program (TCSP)' - a World Bank funded project under the aegis of Ministry of Micro, Small and Medium Enterprises (MSME) of Govt. of India, is a prestigious project for skill development in India. The TCSP seeks to enhance the technological skill base of MSMEs by establishing Technology Centres (TCs) by providing training/skill development courses that will help job seekers to improve their career prospects and find employment.

TCE is the Project Management Consultant (PMC) to the Office of Development Commissioner - Ministry of MSME for TCSP project. The scope is to provide architectural planning, engineering design and construction management services for the construction of 10 new technology centres viz. Bhiwadi, Durg, Bengaluru, Rohtak, Pudi (Visakhapatnam), Greater Noida, Sitarganj, Puducherry, Baddi, Imphal and upgradation of three existing technology centres viz. Mumbai, Aurangabad and Bhubaneswar.



Coal fired project at Zambles, Philippines

Masinloc Power Partners Co. Limited has awarded the Engineering, Procurement and Construction (EPC) contract to M/s POSCO engineering and construction limited. Tata Consulting Engineers Limited (TCE) is providing the consulting engineering services to the EPC company for this project. The scope of services includes basic and detailed engineering services covering mechanical, electrical, C&I and piping.